

65 watt photovoltaic module

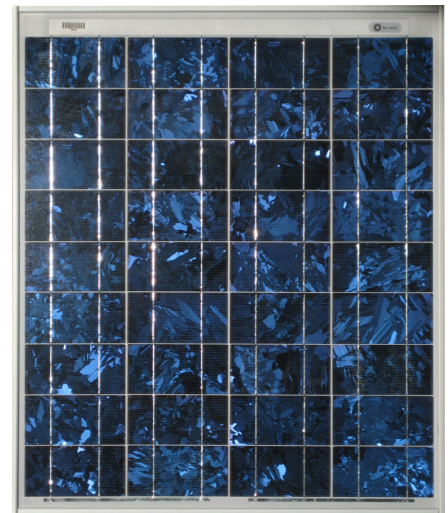
BP 365

The BP 365 is an advanced 65W photovoltaic module that addresses the needs of rural electrification, from remote homes that do not have access to the utility grid, to remote industrial applications such as telemetry and instrumentation systems. This product offers improved efficiency through the use of advanced polycrystalline cells with SiN coating and a 12V nominal output, making it ideal for battery charging applications. It has proven performance at high temperatures and its robust design makes the product durable in the field and easy to install.

Performance

BP 365

Rated power	65W
Nominal voltage	12V
Warranty	90% of minimum warranted power output over 12 years 80% of minimum warranted power output over 25 years Free from defects in materials and workmanship for 5 years



BP 365J

Configuration

BP 365J	Universal frame with an accessible junction box for cable connection
---------	--

Qualification test parameters

Temperature cycling range	-40°C to +85°C for 200 cycles
Damp heat test	85°C and 85% relative humidity for 1000h
Front and rear static load test (eg: wind)	2400 Pa
Front load test (eg: snow)	5400 Pa
Hailstone impact test	25mm hail at 23m/s from 1m distance

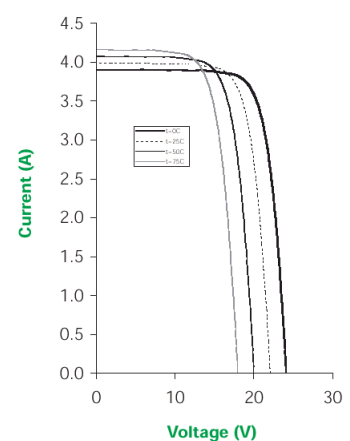
Quality and safety

- Manufactured in ISO 9001 certified factory

Listed to UL1703 Standard for Safety by Intertek ETL (Class C fire rating)

Approved by Factory Mutual Research in NEC Class 1, Division 2, Groups C and D hazardous locations

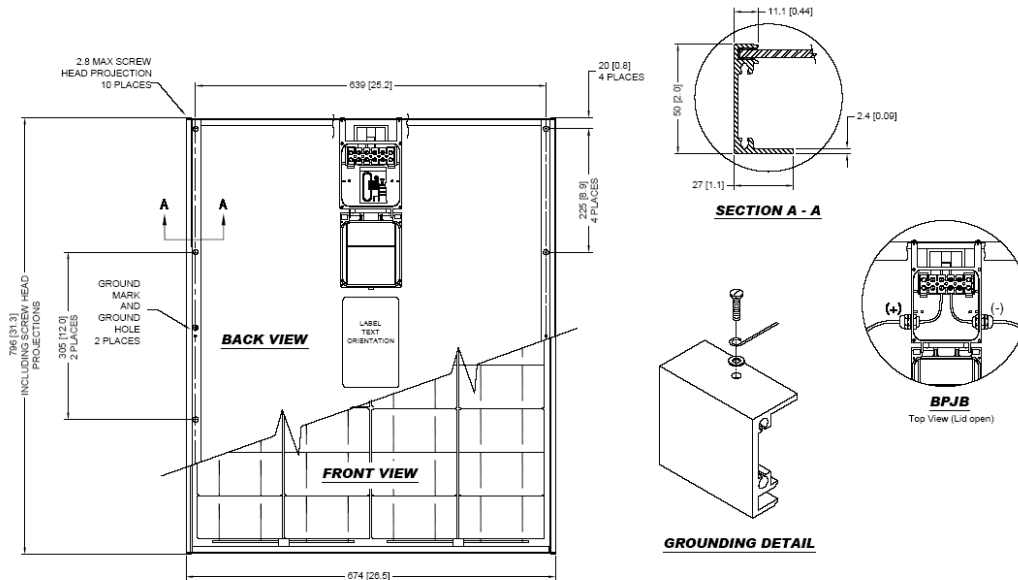
BP 365 I-V Curves



65 watt photovoltaic module

BP 365

Module diagram



Self-tapping grounding screw, instruction sheet and warranty document included with each module.

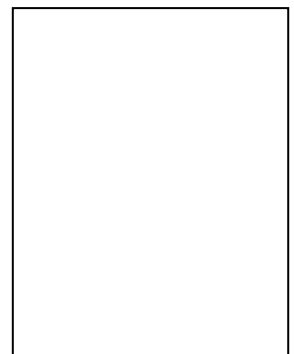
Typical electrical characteristics BP 365

Rated power (P_{max}) ¹	65W
Warranted minimum power	60W
Voltage at P_{max} (V_{mp})	17.6V
Current at P_{max} (I_{mp})	3.69A
Short circuit current (I_{sc})	3.99A
Open circuit voltage (V_{oc})	21.7V
Temperature coefficient of I_{sc}	(0.065±0.015)%/°C
Temperature coefficient of V_{oc}	-(80±10)mV/°C
Temperature coefficient of P_{max}	-(0.5±0.05)%/°C
NOCT ²	47±2°C
Maximum series fuse rating	20A
Maximum system voltage	600V (ETL rating)

Mechanical characteristics BP 365J

Dimensions (Overall tolerances +/-3mm)	796 x 674 x 50 mm
Weight	6.4 kg
Frame	Clear anodised aluminium, alloy type 6063T6. Colour: silver.
Solar cells	36 cells (156mm x 78mm) configured geometrically for a 9 x 4 matrix connected in series.
Junction box	IP65 junction box with four terminal screw connection block, accepts PG 13.5, M20, 13mm conduit, or cable fittings accepting 6–12mm diameter cable. Terminals accept 2.5 – 10mm ² (8 to 14 AWG) wire.
Diodes	IntegraBus TM technology includes Schottky by-pass diodes integrated into the printed circuit board bus
Construction	Front: high transmission 3mm tempered glass. Rear: white polyester; encapsulant: EVA.

Your BP Solar Dealer:



1. Standard test conditions (STC), irradiance of 1000W/m² at an AM1.5G solar spectrum and a cell temperature of 25°C.
2. Normal operating cell temperature (NOCT) air temperature of 20°C; irradiance 800W/m²; wind speed 1m/s.